

T-10 Gasoline Engine Adjustment & Notices

Install:

1. The CDI needs to be installed as far as possible from other electronic parts.
2. Please use gasoline fuel tubing in fuel tank.
3. The red wire in CDI connects to battery and black wire connects to sensor.
4. Ignition wire connector needs to be connected to spark plug all the way down and turn clockwise to tighten with the spark plug. Make sure the connection is tight or it may be interfered by other electronic parts.
5. The recommended ratio of gasoline to two-stroke engine oil is 10:1. E.g. 1000 c.c. gasoline mixed with 100 c.c. two-stroke engine oil. The ratio is adjustable depending on the weather and engine working temperature.

Engine Break-In (Needle Valve setting):

1. Open the main (high speed) needle valve 1 and 3/4 turns from the fully closed position.
2. Open the low speed needle valve 4 and 1/4 turns from the fully closed position.

Normal 3D model needle valve setting after Engine break-in:

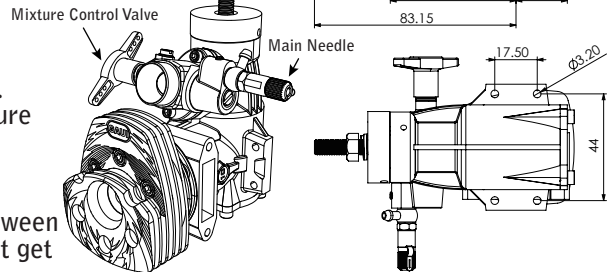
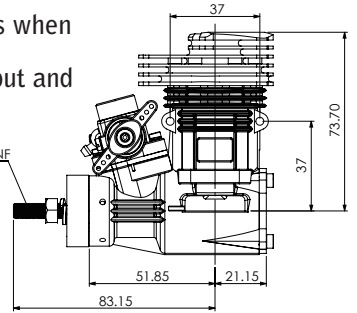
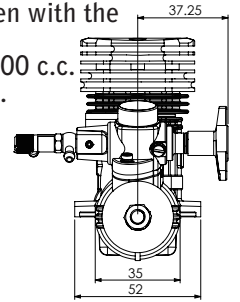
1. Open the main (high speed) needle valve 1 and 1/4 turns from the fully closed position.
2. Open the low speed needle valve 4 and 1/4 turns from the fully closed position. Please adjust proper idle speed in the device.

Notices

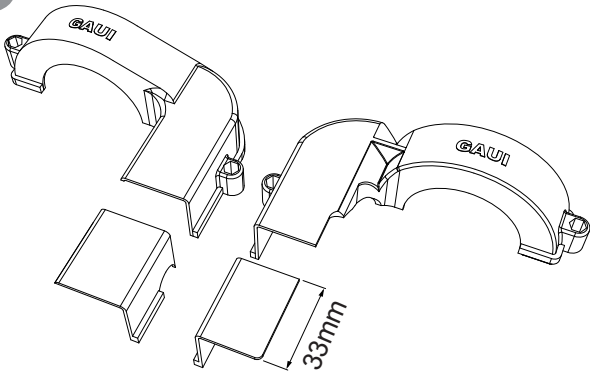
1. Use independent Power sources for receiver and CDI. Keep CDI away from other electronic parts when installing.
2. Please break-in new engine using at least 1000cc at idle speed to achieves maximum power output and extends engine life.
3. Please use gasoline fuel tubing in fuel tank.
4. Exhaust back pressure method is not recommended.
5. Fuel mixture Ratio: 10:1. 10parts gasoline & 1part two-stroke engine oil
6. Auxiliary fuel tank and non-bubble weight are recommended in fuel system to prevent engine stop. When air get into fuel tubing it will affect engine performance.
7. Make sure ignition wire and spark plug are tightened together. & not loose

Troubleshooting

1. If throttle servo is shaking or interfered:
 - * Please adjust the angle of receiver antenna to reduce the interference.
 - * Please check the CDI ignition wire and spark plug connection. Make sure they are all tightening together. (Install Step 4)
 - * Please make sure CDI is away from receiver at least 15cm.
 - * Please check wire surface and condition on CDI.
2. If the engine rotational speed changes very rapidly (slow) or jump between fast and slow, please refer to troubleshooting 1. If the situation doesn't get better, please check the throttle servo's for interference.

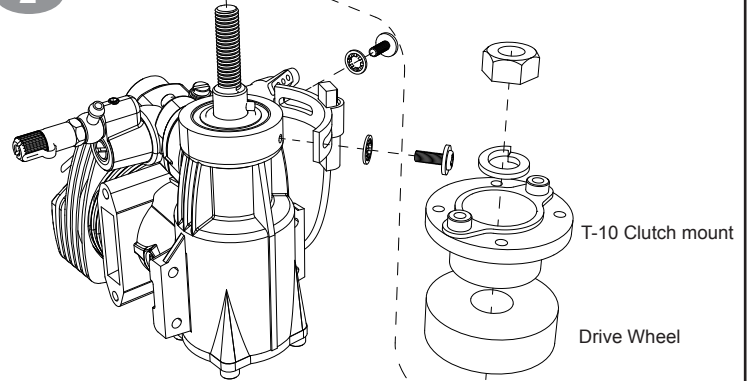


1



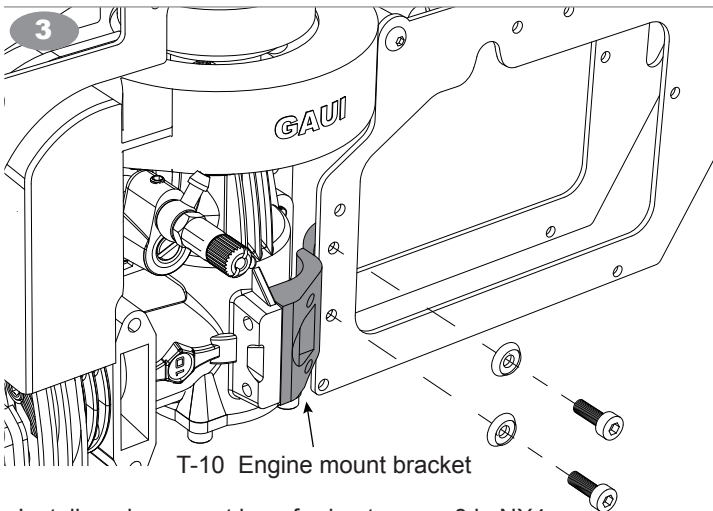
Trim the fan shroud by 33mm as illustration shows and makes sure it does not interfere after installing the engine.

2



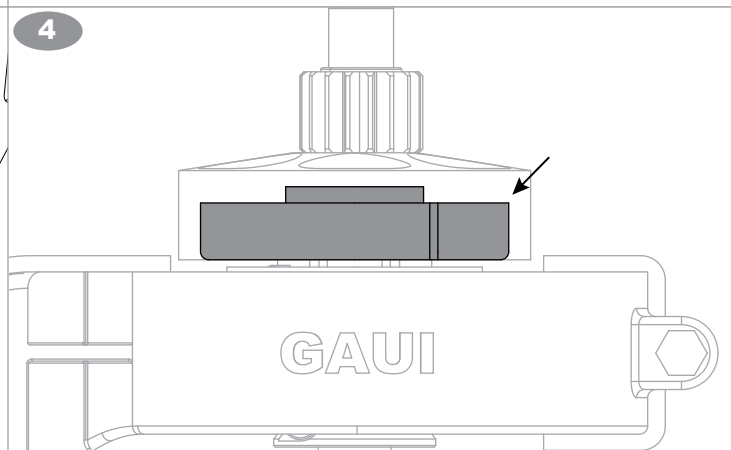
Install sensor as shown and install clutch mount by referring to NX4 instruction manual.

3



Install engine mount by referring to page 8 in NX4 instruction manual.

4



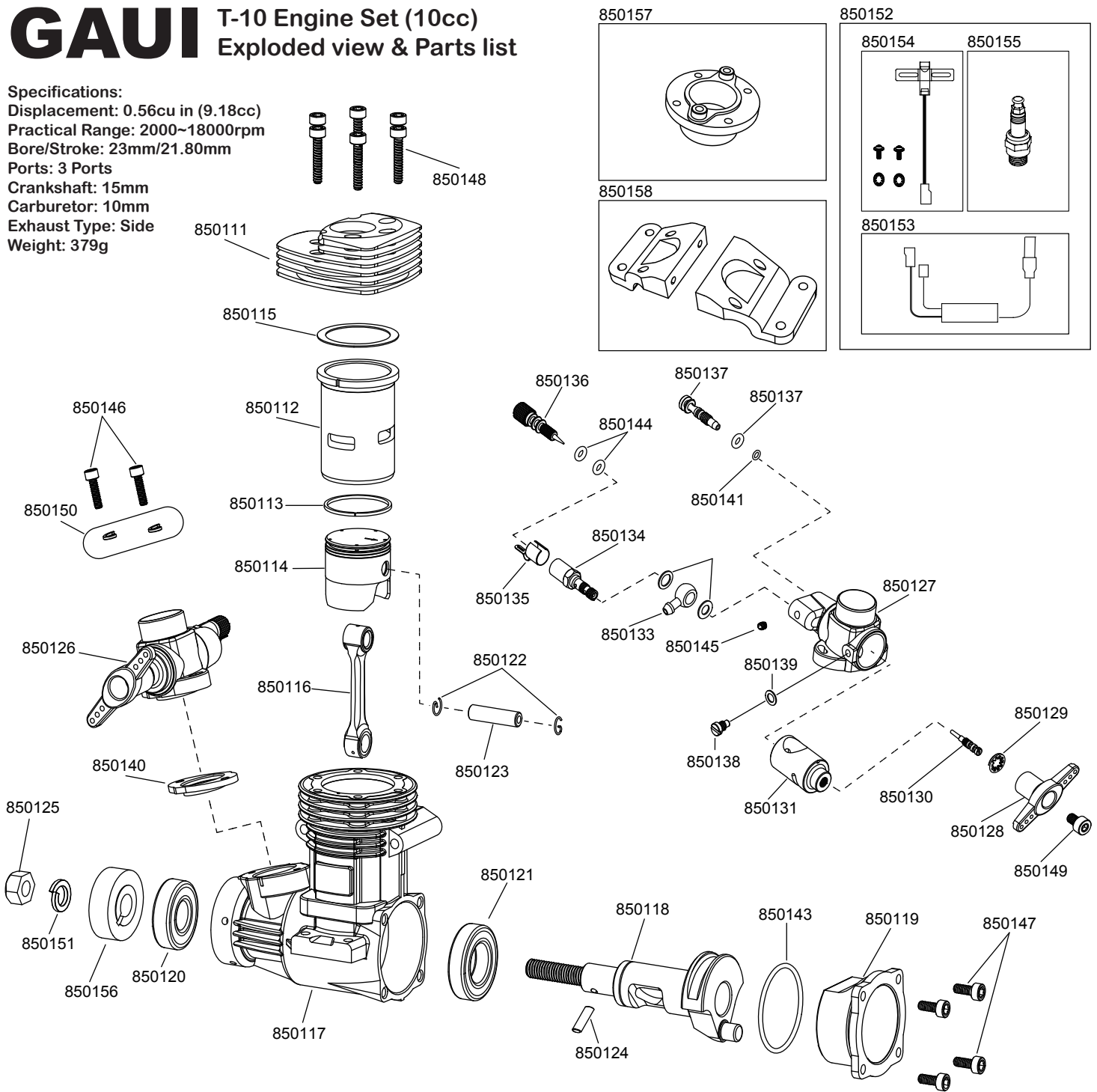
After finishing installment of engine. Please manually check the clutch bell is operating smoothly.

GAUI T-10 Engine Set (10cc)

Exploded view & Parts list

Specifications:

Displacement: 0.56cu in (9.18cc)
 Practical Range: 2000~18000rpm
 Bore/Stroke: 23mm/21.80mm
 Ports: 3 Ports
 Crankshaft: 15mm
 Carburetor: 10mm
 Exhaust Type: Side
 Weight: 379g



(Engine Parts)	(Carburetor Parts)	O-Ring	CDI Ignition System
850111 T-10 CNC Heatsink Head (Black)	850126 Carburetor (Rotary Valve) - Complete	850141 O-Ring 2.4 x 0.8mm Mixture Control Valve	850152 Full CDI Ignition System
850112 Cylinder Sleeve (ASC Type)	850127 Carburetor Main Body	850142 O-Ring 2.9 x 1.78mm Mixture Control Valve	850153 Single Ignition - Straight
850113 Piston Ring	850128 Throttle Servo Horn (Dual 180°)	850143 O-Ring 27 x 1.5mm Cover Plate	850154 Rotation Sensor
850114 Piston (ASC Type)	850129 Anti-Slip Washer (1pcs)	850144 O-Ring 2.9 x 1.57mm(2Pcs) Main Needle	850155 Spark Plug for .56 Gas Heli. Engine
850115 Gasket 0.2mm	850130 Metering Needle (1pcs)	Screw / Washer	(Drive Wheel / Fan / Engine Mount)
850116 Connecting Rod (ASC Type)	850131 Throttle Valve	850145 Carb. Main Needle Plug M3x3mm (1pcs)	850156 Drive Wheel
850117 Crankcase (Black)	850132 Fuel Supply Washer 2Pcs (6.4x9.2x0.5)	850146 Carburetor M2.6 x 12mm (2pcs)	850157 T-10 Clutch mount
850118 Crankshaft (OS Type)	850133 Fuel Nipple 1Pcs (6.45mm)	850147 Cover Plate M3 x 8mm (4pcs)	850158 T-10 Engine mount bracket
850119 Cover Plate (Black)	850134 Main Needle Housing	850148 Heatsink Head M3 x 10mm (6pcs)	850159 T-10 Gasoline fuel line
850120 Front Crankshaft Bearing (9.5x22.2x7mm)	850135 Index Clip For Main Needle	850149 Servo Horn M4 x 6mm (1pcs)	
850121 Rear Crankshaft Bearing (15x28x7mm)	850136 Main Needle	850150 Spring Washer 2.6mm (2pcs)	
850122 G-Clip for Piston Pin (2pcs/set)	850137 Mixture Control Valve	850151 Drive Wheel Washer 6.5mm (1pcs)	
850123 Piston Pin (19x4.985mm)	850138 Throttle Valve Stopper Screw 1Pcs		
850124 Drive Pin (2.5x10mm)	850139 Throttle Stopper Washer 1Pcs		
850125 Crankshaft Lock Nut	850140 Composite Carburetor Gasket		